

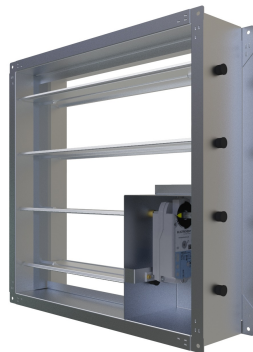
Square Smoke Damper Type ESD

Product Features:

- Electrically Operated Only
- Actuator Normally Open OR Closed
- Side Seals with Parallel Blades
- Minimum Size 200mm x 150mm
- Maximum Size 1500mm x 2400mm
- Standard Depth of 180mm
- Extended Shaft Option
- 30mm Flanges
- Horizontal or Vertical Installation



Tested to SANS193:2013



Ordering Code:

ESD - () / w x h x d

ESD
(ES)
(24V)
(220V)

- Square Smoke Damper
- Extended Shaft
- 24V Actuator (Spring Return)
- 220V Actuator (Spring Return)

Application:

- Duct Mounted
- Wall Mounted
- Smoke Extract
- Low Leakage



Unit 9, 20 Harris Drive
Ottery Cape Town
South Africa
Contact: +27 21 703 8755
Email: sales@electrovent.co.za
Website: www.electrovent.co.za

ELECTROVENT